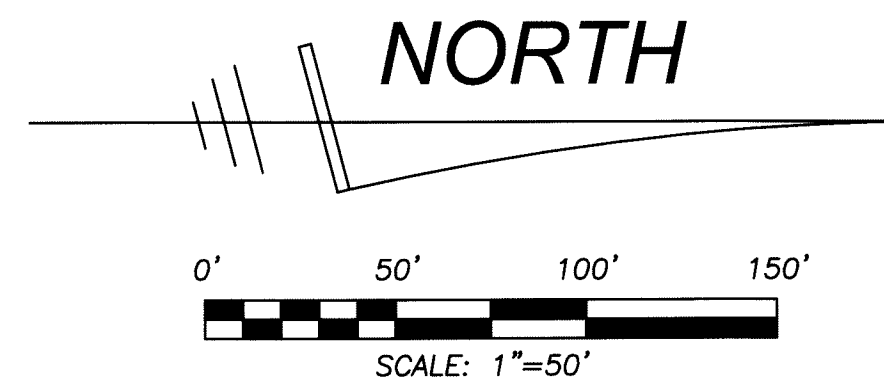


LAN-HILL FPU

Being a Plat of a portion of Section 34, Township 44 South, Range 43 East,
Town of Lantana, Palm Beach County, Florida.

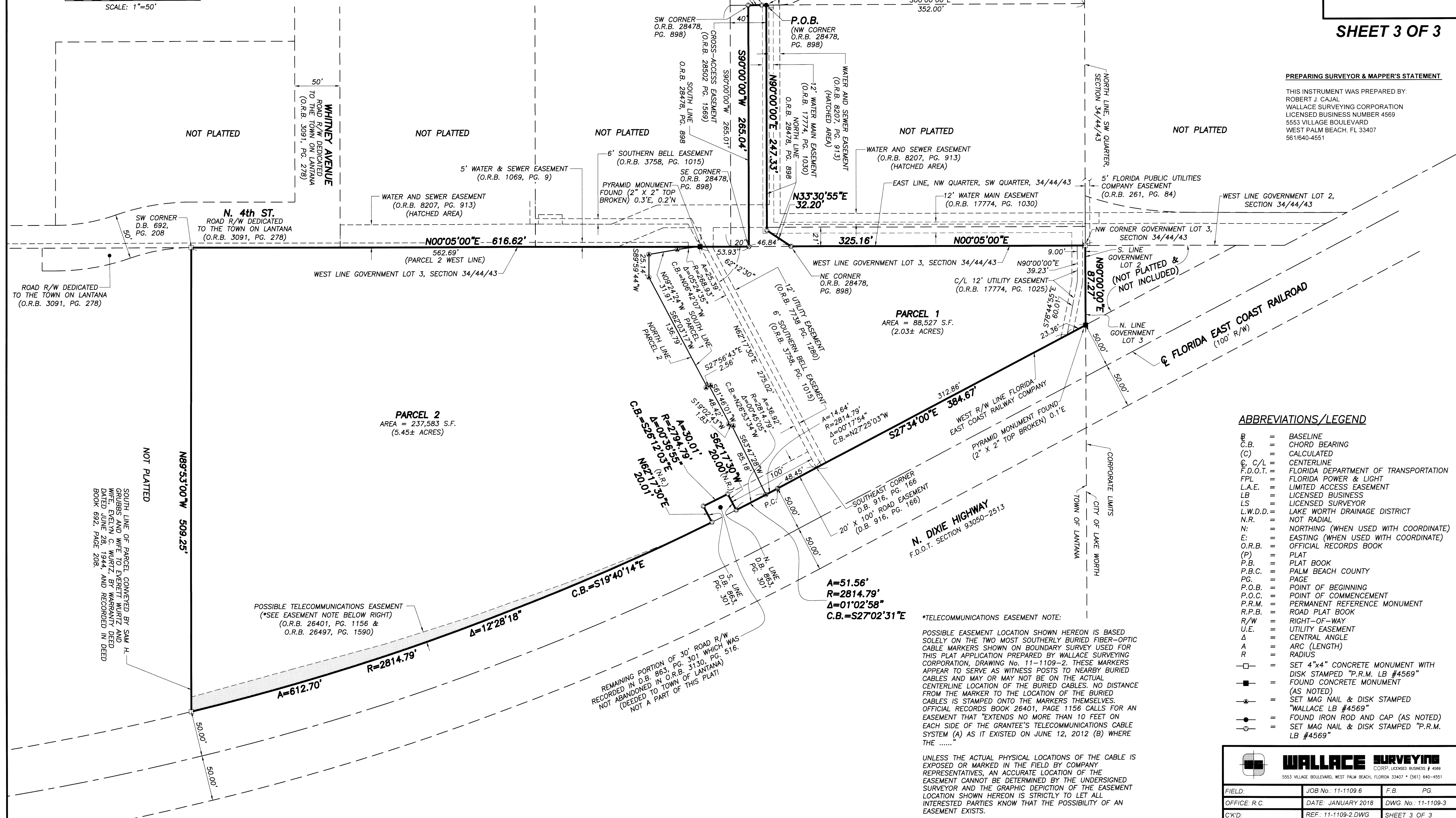
133



SHEET 3 OF 3

PREPARING SURVEYOR & MAPPER'S STATEMENT

THIS INSTRUMENT WAS PREPARED BY:
ROBERT J. CAJAL
WALLACE SURVEYING CORPORATION
LICENSED BUSINESS NUMBER 4569
5553 VILLAGE BOULEVARD
WEST PALM BEACH, FL 33407
561/640-4551



ABBREVIATIONS/LEGEND

B	=	BASELINE
C.B.	=	CHORD BEARING
(C)	=	CALCULATED
C, C/L	=	CENTERLINE
F.D.O.T.	=	FLORIDA DEPARTMENT OF TRANSPORTATION
FPL	=	FLORIDA POWER & LIGHT
L.A.E.	=	LIMITED ACCESS EASEMENT
LB	=	LICENSED BUSINESS
LS	=	LICENSED SURVEYOR
L.W.D.D.	=	LAKE WORTH DRAINAGE DISTRICT
N.R.	=	NOT RADIAL
N:	=	NORTHING (WHEN USED WITH COORDINATE)
E:	=	EASTING (WHEN USED WITH COORDINATE)
O.R.B.	=	OFFICIAL RECORDS BOOK
(P)	=	PLAT
P.B.	=	PLAT BOOK
P.B.C.	=	PALM BEACH COUNTY
PG.	=	PAGE
P.O.B.	=	POINT OF BEGINNING
P.O.C.	=	POINT OF COMMENCEMENT
P.R.M.	=	PERMANENT REFERENCE MONUMENT
R.F.B.	=	ROAD PLAT BOOK
R/W	=	RIGHT-OF-WAY
U.E.	=	UTILITY EASEMENT
Δ	=	CENTRAL ANGLE
A	=	ARC (LENGTH)
R	=	RADIUS
□	=	SET 4"x4" CONCRETE MONUMENT WITH DISK STAMPED "P.R.M. LB #4569"
■	=	FOUND CONCRETE MONUMENT (AS NOTED)
⊙	=	SET MAG NAIL & DISK STAMPED "WALLACE LB #4569"
⊙	=	FOUND IRON ROD AND CAP (AS NOTED)
⊙	=	SET MAG NAIL & DISK STAMPED "P.R.M. LB #4569"

***TELECOMMUNICATIONS EASEMENT NOTE:**
POSSIBLE EASEMENT LOCATION SHOWN HEREON IS BASED SOLELY ON THE TWO MOST SOUTHERLY BURIED FIBER-OPTIC CABLE MARKERS SHOWN ON BOUNDARY SURVEY USED FOR THIS PLAT APPLICATION PREPARED BY WALLACE SURVEYING CORPORATION, DRAWING No. 11-1109-2. THESE MARKERS APPEAR TO SERVE AS WITNESS POSTS TO NEARBY BURIED CABLES AND MAY OR MAY NOT BE ON THE ACTUAL CENTERLINE LOCATION OF THE BURIED CABLES. NO DISTANCE FROM THE MARKER TO THE LOCATION OF THE BURIED CABLES IS STAMPED ONTO THE MARKERS THEMSELVES. OFFICIAL RECORDS BOOK 26401, PAGE 1156 CALLS FOR AN EASEMENT THAT "EXTENDS NO MORE THAN 10 FEET ON EACH SIDE OF THE GRANTEE'S TELECOMMUNICATIONS CABLE SYSTEM (A) AS IT EXISTED ON JUNE 12, 2012 (B) WHERE THE

UNLESS THE ACTUAL PHYSICAL LOCATIONS OF THE CABLE IS EXPOSED OR MARKED IN THE FIELD BY COMPANY REPRESENTATIVES, AN ACCURATE LOCATION OF THE EASEMENT CANNOT BE DETERMINED BY THE UNDERSIGNED SURVEYOR AND THE GRAPHIC DEPICTION OF THE EASEMENT LOCATION SHOWN HEREON IS STRICTLY TO LET ALL INTERESTED PARTIES KNOW THAT THE POSSIBILITY OF AN EASEMENT EXISTS.

WALLACE SURVEYING
CORP., LICENSED BUSINESS # 4569
5553 VILLAGE BOULEVARD, WEST PALM BEACH, FLORIDA 33407 • (561) 640-4551

FIELD:	JOB No.: 11-1109 6	F.B.	PG
OFFICE/R.C.	DATE: JANUARY 2018	DWG No.:	11-1109-3
C/K'D:	REF.: 11-1109-2.DWG	SHEET	3 OF 3